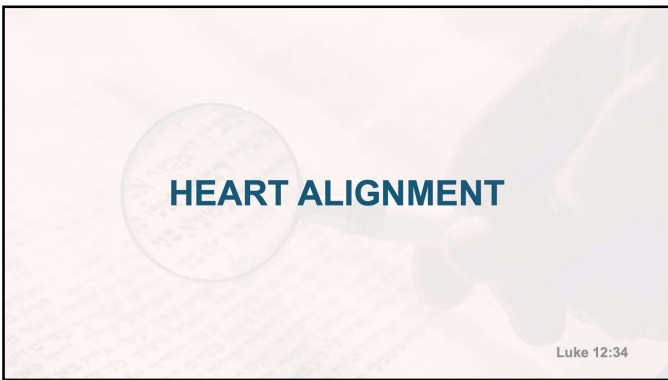


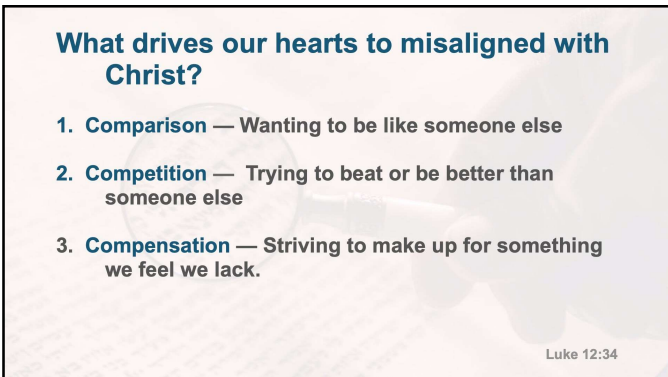
For where your treasure is, there your heart will be also.

— Luke 12:34



HEART ALIGNMENT

Luke 12:34



What drives our hearts to misaligned with Christ?

1. **Comparison** — Wanting to be like someone else
2. **Competition** — Trying to beat or be better than someone else
3. **Compensation** — Striving to make up for something we feel we lack.

Luke 12:34

Summary: Luke 12:1-21

1. Jesus prepares the disciples for what they will encounter as his followers (Luke 12)
2. Jesus tells a parable about a misguided rich man (Luke 11:29-32)

Summary: Luke 12:1-21

Where Your Treasure Is
Luke 12:22-34

1 Heart Alignment starts with making God your source for everything.

Luke 12:22-28

2 Heart Alignment means having the right passions, desires, and goals.

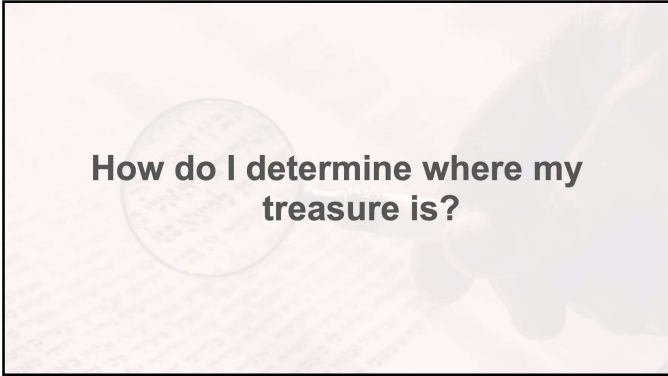
Luke 12:29-30

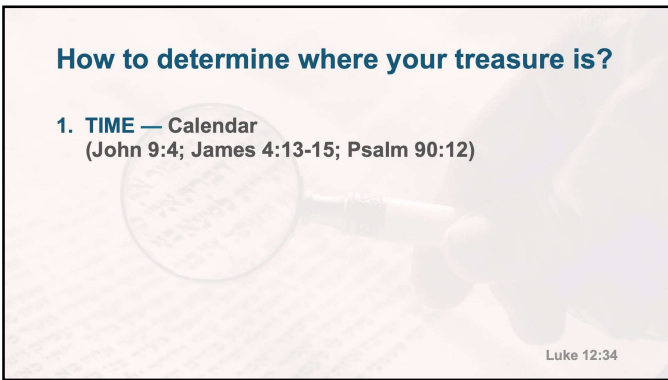
3 God Alignment means having the right priorities.

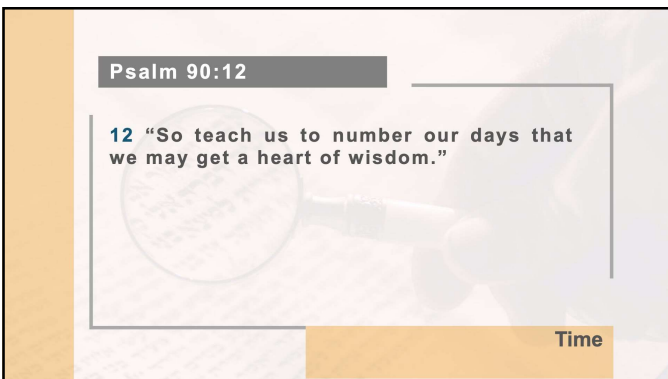
Luke 12:31-32

4 Heart Alignment means making spiritual investments and receiving spiritual returns.

Luke 12:33-34







John 9:4

4 “As long as it is day, we must do the works of him who sent me. Night is coming, when no one can work.”

Time

James 4:13-15

13-15 “Come now, you who say, “Today or tomorrow we will go into such and such a town and spend a year there and trade and make a profit”— yet you do not know what tomorrow will bring (Pro. 27:1). What is your life? For you are a mist that appears for a little time and then vanishes. Instead, you ought to say, “If the Lord wills, we will live and do this or that.”

Time

How to determine where your treasure is?

1. **TIME** — Calendar (John 9:4; James 4:13-15; Psalm 90:12)
2. **MONEY**— Bank Account Activity
3. **COMMUNICATION** — Phone activity, conversations topics

Luke 12:34

How to determine where your treasure is?

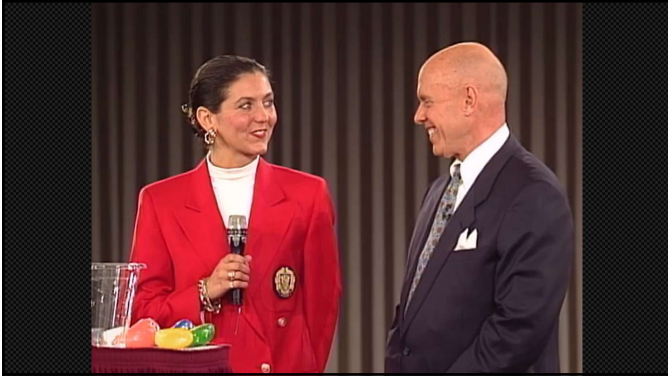
4. **RELATIONSHIPS** — The vitality of your closest relationships (quality not quantity).

5. **ALONE** — The way you care for yourself

Luke 12:34

VIDEO: Steven Covey Big Rocks

Luke 11:2-4

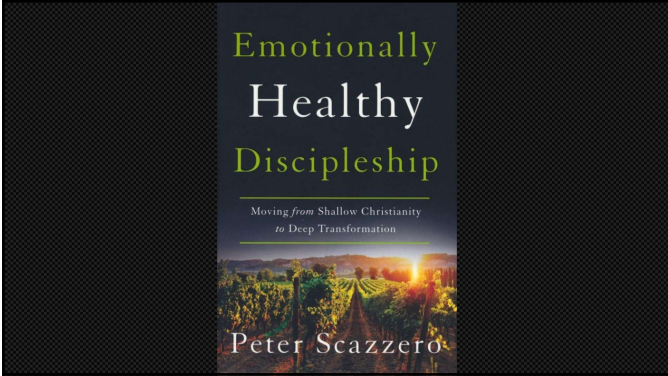


Solution to drive our hearts to align with Christ?

- 1. Comparison (solved)** — Jesus is the only person to compare ourselves
- 2. Competition (solved)** — Jesus is the only competition. Compete to out-love and out-serve him.
- 3. Compensation (solved)**— Jesus is the only one that will make us complete.

Luke 12:34





ACTION ITEM

- 1) In the next 24-48 hours, reflect on the 4 domains of your life (time, money/ resources, relationships, God).
- 2) Then ask your accountability partner to help you bring these 4 areas into alignment.

The **Words** of Jesus
